



GAT MONTHLY MEMBERSHIP PROGRESS REPORT

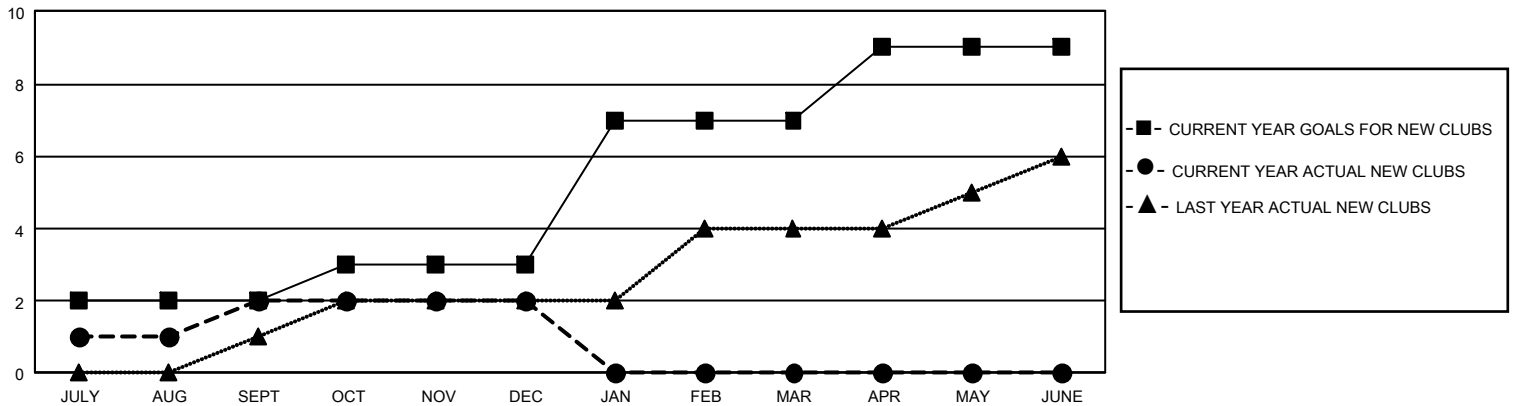
Results as of: 12/31/2025

GMT Constitutional Area 5 - J, Group G

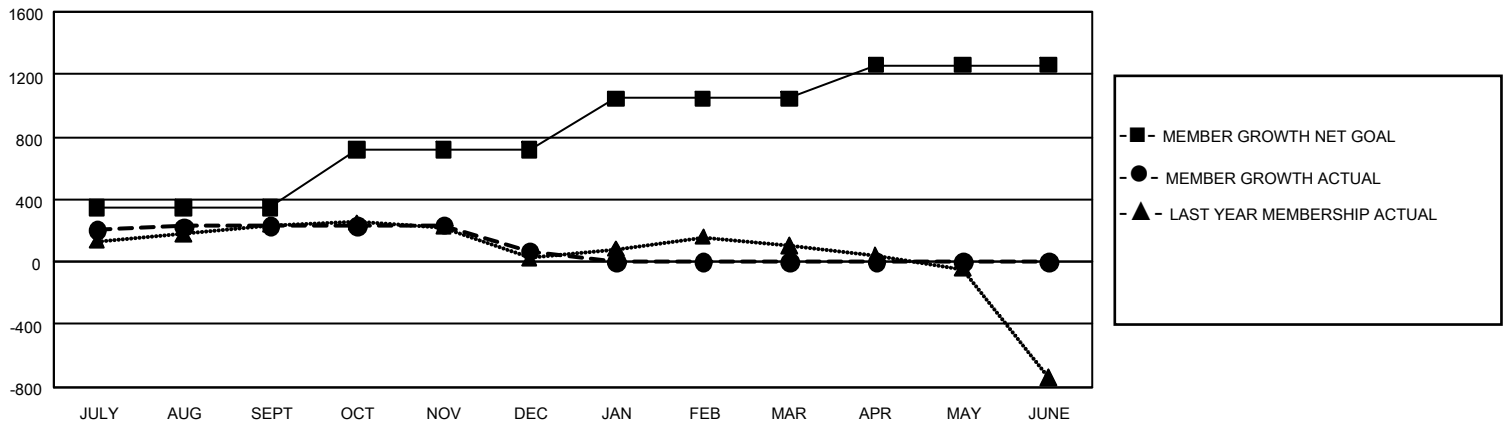
REPORT DOES NOT INCLUDE CLUBS IN UNDISTRICTED AREAS.

| Clubs | | | | Members | | | |
|-----------------------|---------------|-----------|---------------|-----------------------|------------------------|----------------------|--|
| RESULTS FOR 2025-2026 | | | | RESULTS FOR 2025-2026 | | | |
| QUARTER | NEW CLUB GOAL | NEW CLUBS | DROPPED CLUBS | QUARTER | MEMBER GROWTH NET GOAL | MEMBER GROWTH ACTUAL | DROPPED MEMBERS ACTUAL (including transfers) |
| JULY/AUG/SEPT | 6 | 2 | 1 | JULY/AUG/SEPT | 350 | 603 | 300 |
| OCT/NOV/DEC | 3 | 0 | 4 | OCT/NOV/DEC | 370 | 222 | 369 |
| JAN/FEB/MAR | 12 | 0 | 0 | JAN/FEB/MAR | 325 | 0 | 0 |
| APR/MAY/JUNE | 6 | 0 | 0 | APR/MAY/JUNE | 215 | 0 | 0 |

GOALS AND ACTUAL NEW CLUBS CUMULATIVE



GOALS AND ACTUAL MEMBERS CUMULATIVE



DROPPED CLUBS: 5

265 CLUBS OF 556 ADDED 1 OR MORE NEW MEMBERS

GENDER DISTRIBUTION

| | |
|----------------------|-----------------|
| MALE | 11,792 (80.09%) |
| FEMALE | 2,925 (19.87%) |
| NON BINARY | 1 (0.01%) |
| PREFER NOT TO ANSWER | 5 (0.03%) |

DROPPED MEMBERS

| | |
|----------------|------------|
| DECEASED | 51 |
| CLUB CANCELLED | 21 |
| OTHER | 595 |
| TOTAL | 667 |

[CLICK HERE FOR CUMULATIVE MEMBERSHIP DATA](#)

TOTAL FAMILY UNIT MEMBERS 2,859

FAMILY MEMBERS PAYING HALF DUES 1,605